

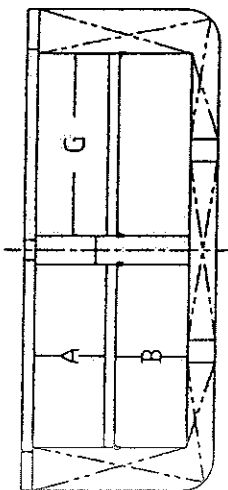
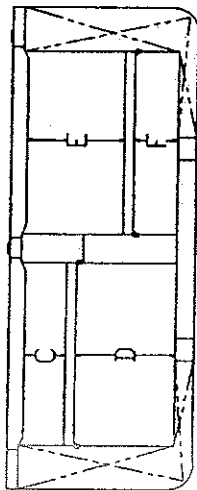
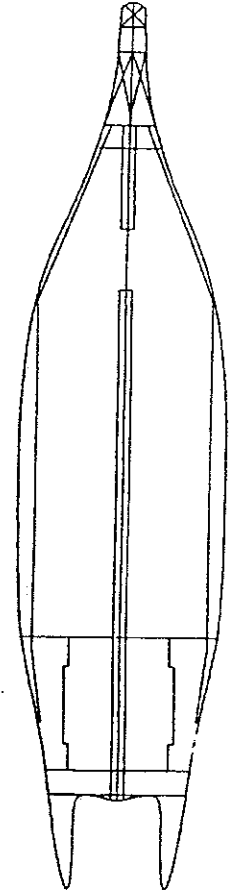
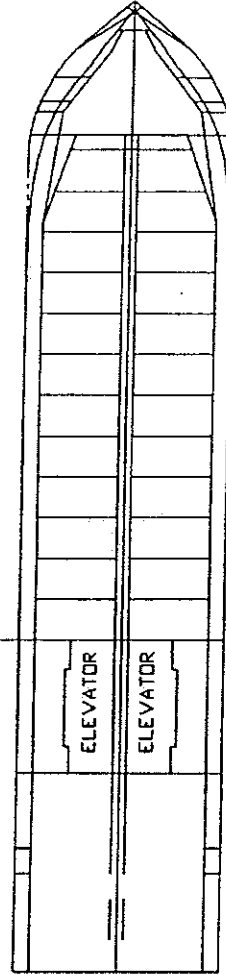
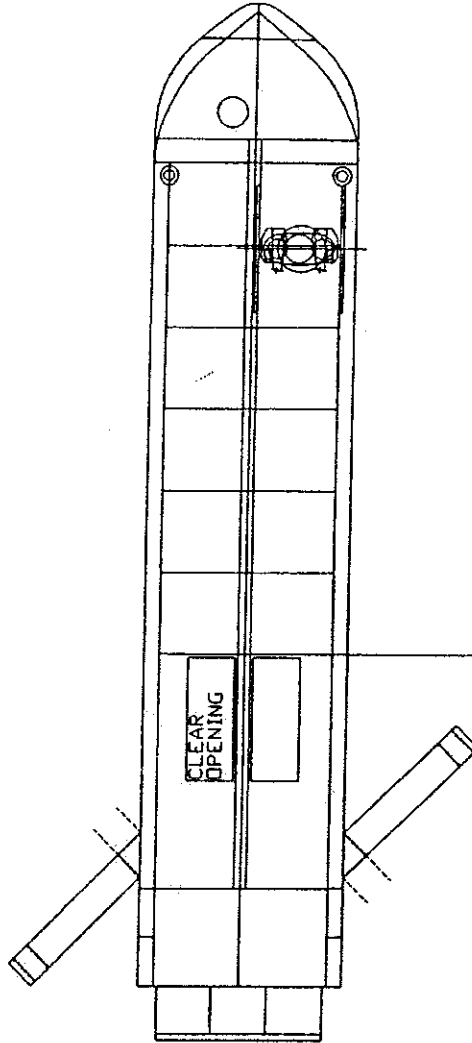
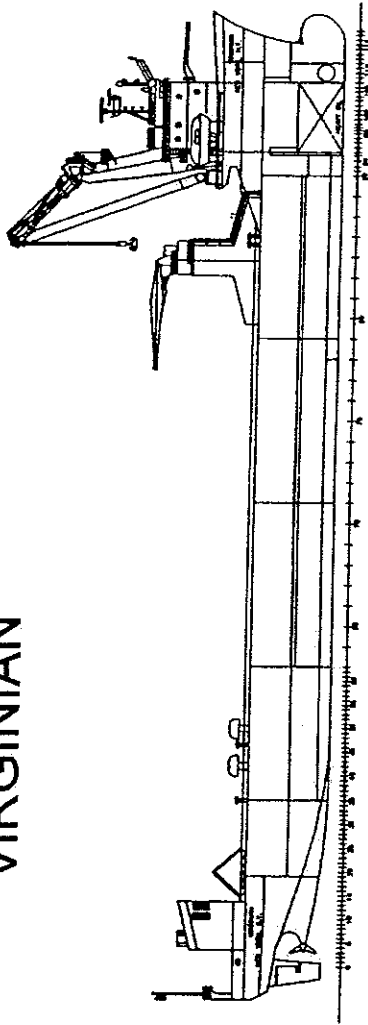


M/V VIRGINIAN

| | |
|--------------------|---|
| FLAG | U S A |
| TYPE | RORO, LIFT ON/LIFT OFF, HEAVY LIFT, CONTAINER VESSEL |
| CLASS | GL MS +100A5 E, RoRo Ship, Heavy Cargoes, Carriage of Containers |
| LOA | 156.077 METERS |
| BEAM | 32 METERS |
| DEPTH | 13.25 METERS |
| DRAUGHT | 9.017 METERS AT 20,375 METRIC TONS CARGO |
| SPEED | ABOUT 16 KTS |
| ENGINES | TWO MAIN ENGINES DRIVING INDEPENDENT CONSTANT SPEED PROPELLERS |
| DERRICKS/CRANES | ONE 800 METRIC TON DERRICK AND ONE TRAVELLING GANTRY WITH DUAL PORTAL CRANES MOUNTED THAT ARE RATED AT 75 METRIC TONS EACH AND COMBINED AT 150 METRIC TONS |
| CARGO GEAR | VESSEL CARRIES 400 MT AND 800 MT SWL LIFTING BEAMS PLUS ADDITIONAL LIFTING BEAMS AND SPREADER BARS. VESSEL ALSO CARRIES CONTAINER FITTINGS AND EQUIPMENT. |
| HOLDS/HATCHES | ONE HOLD HATCH WITH CLEAR OPENING 77 METERS X 12.44 METERS PER SIDE. VESSEL HAS TWEEN DECK THAT CAN BE SET IN THREE DIFFERENT HEIGHTS. |
| RORO LANES | 2,500 METERS |
| CARGO CAPACITY | 22,925 CUBIC METERS BALE |
| CONTAINER CAPACITY | UNDERDECK 507 TEU'S ON DECK 906 TEU'S TOTAL 1413 TEU'S |
| REEFER PLUGS | 100 |
| RORO RAMPS | ONE HEAVY-LIFT RAMP TO WEATHER DECK RATED AT 2,500 METRIC TONS VEHICLE RAMP FOR EITHER PORT OR STARBOARD SIDE RATED AT 60 METRIC TONS WHICH CAN BE UP-GRADED TO 70 METRIC TONS. |
| ELEVATORS | TWO TRAILER ELEVATORS RATED AT 70 METRIC TONS WHICH TAKE VEHICLES FROM WEATHER DECK TO THE TWEEN DECK AND LOWER HOLD |

Sealift, Inc.
68 West Main Street, Oyster Bay, New York, 11771
Phone:(516)922-1101
Fax: (516)922-6526
www.sealiftinc.com
E-mail: info@sealiftinc.com

VIRGINIAN



TWEEN DECK CAN BE SET AT THREE DIFFERENT POSITIONS GIVING THE FOLLOWING HOLD HEIGHTS:

- A: 5.053 M
- B: 4.780 M
- C: 3.043 M
- D: 6.790 M
- E: 6.853 M
- F: 2.980 M

HOLD WIDTH PER SIDE:
G: 12.430 M

ELEVATOR CLEAR FLOOR SPACE:
19.148 X 6.10 M PER SIDE